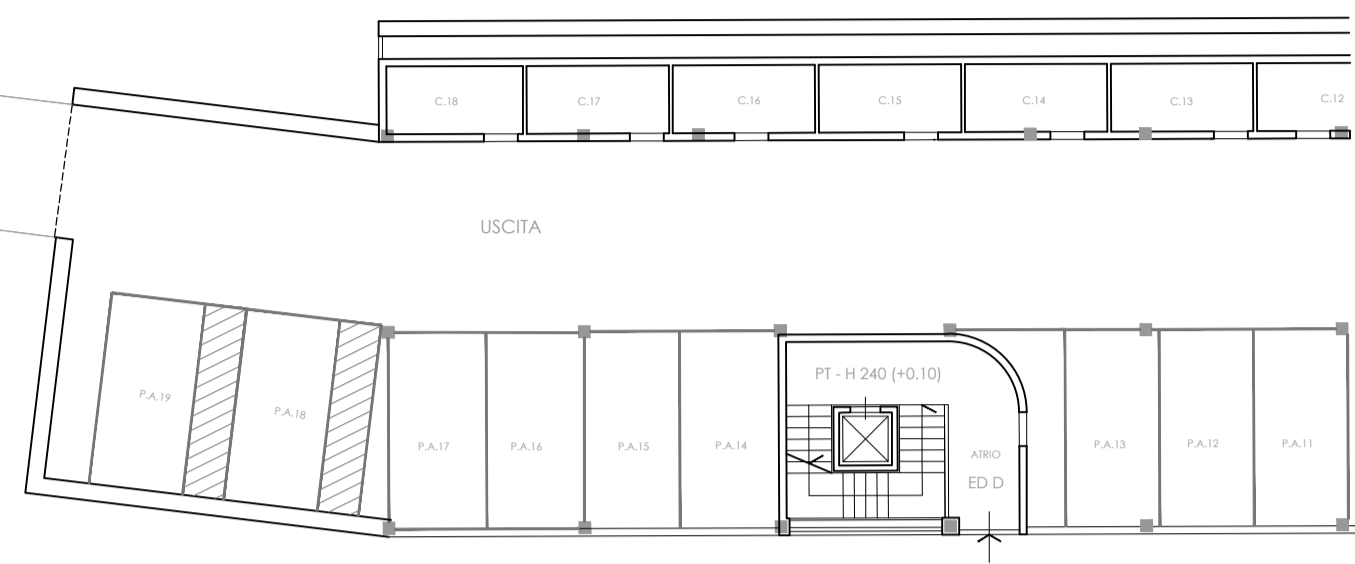


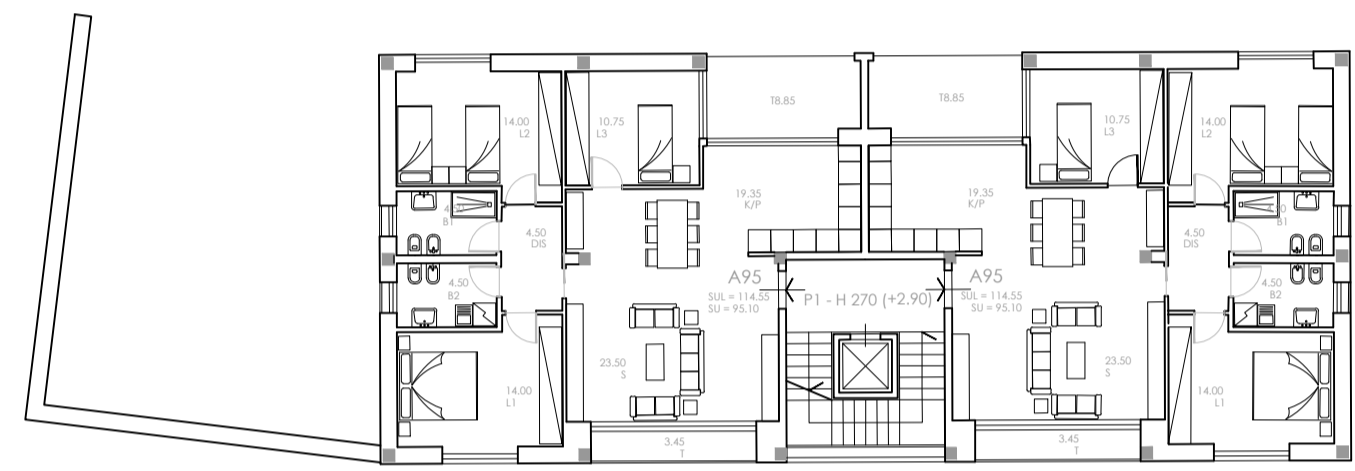
STECCA 3

EDIFICIO 11 - TIPO D

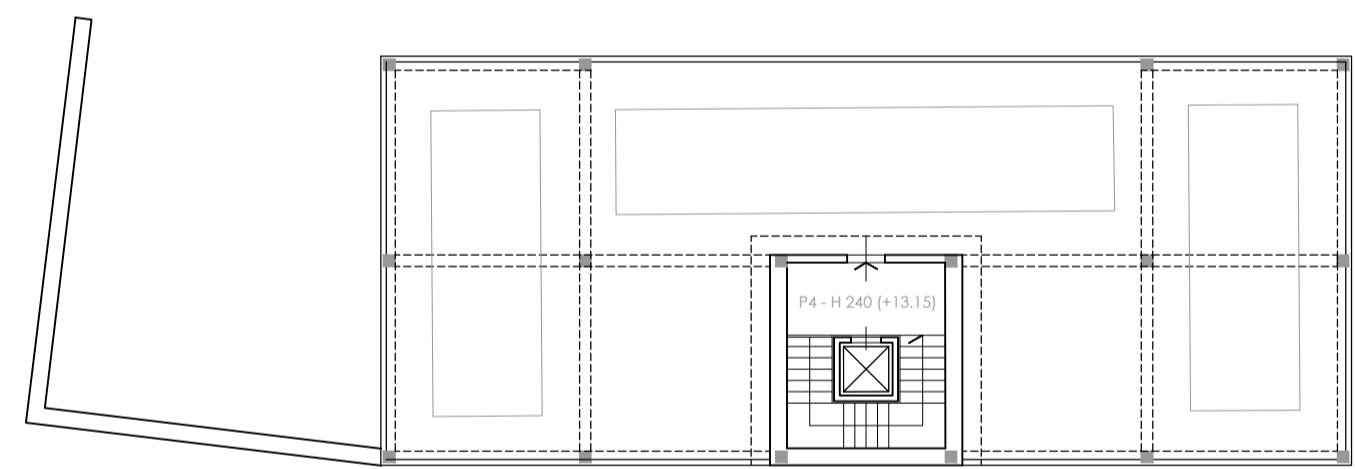
LIVELLO TERRA



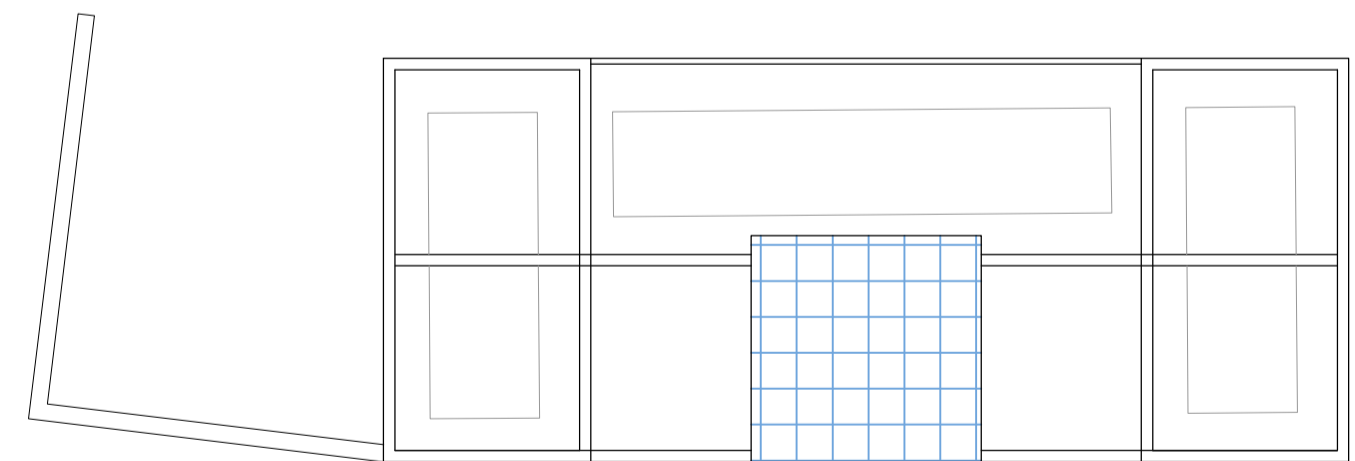
PIANO TIPO (1-2-3)



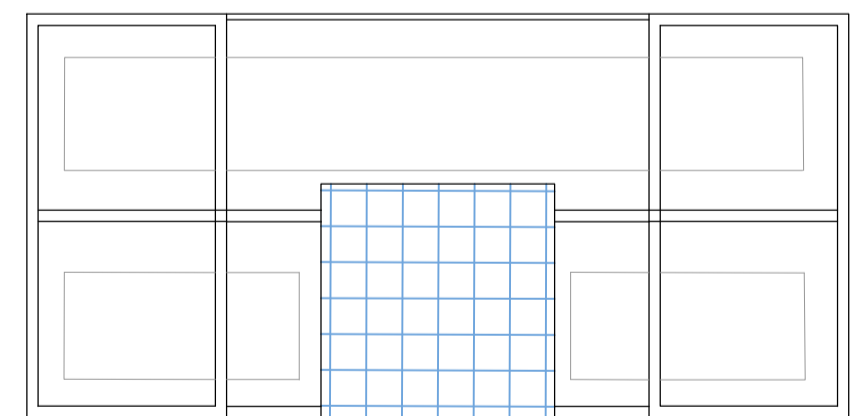
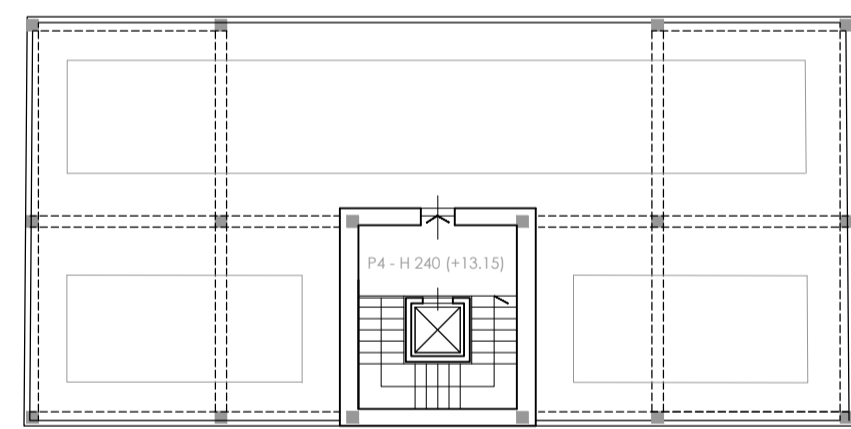
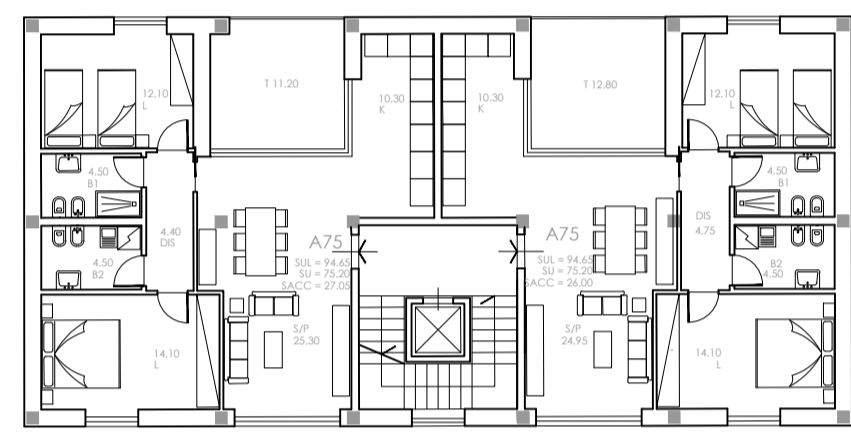
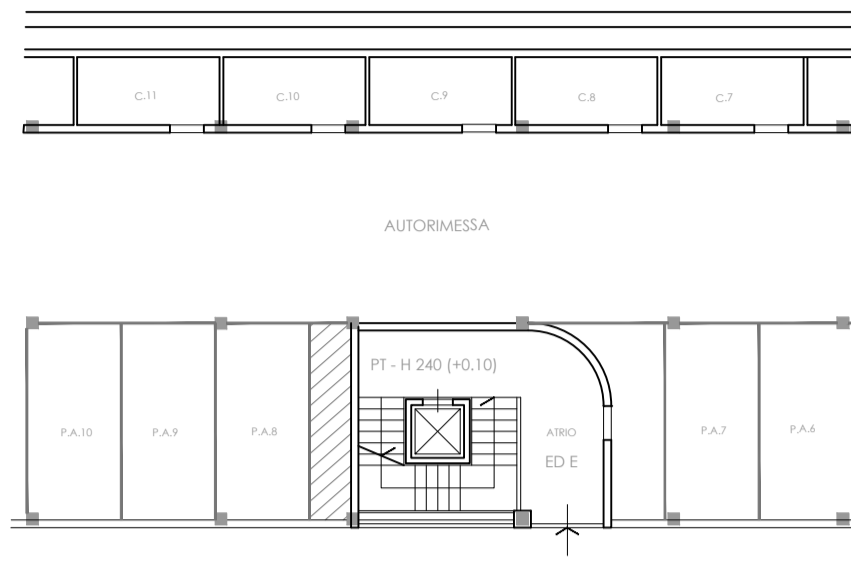
LIVELLO 4



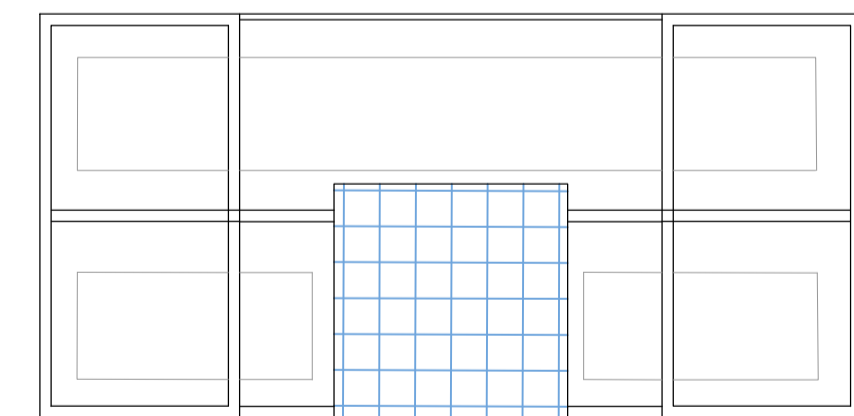
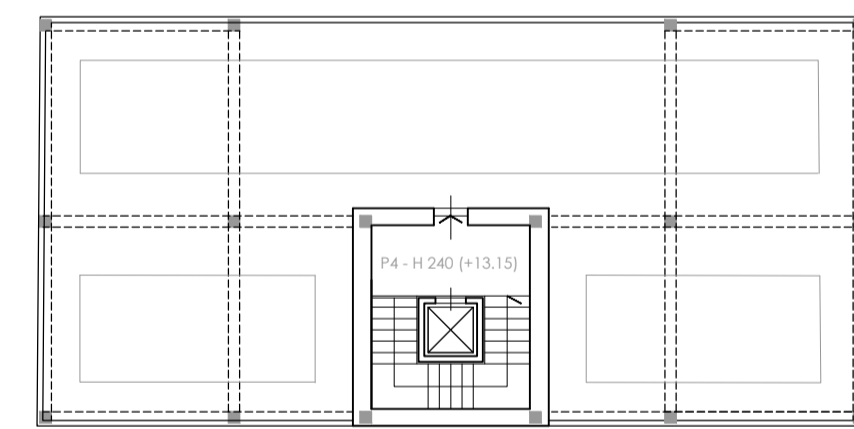
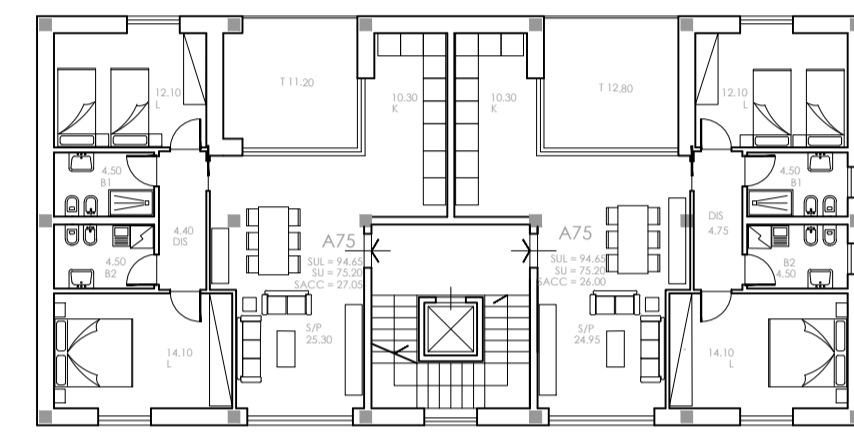
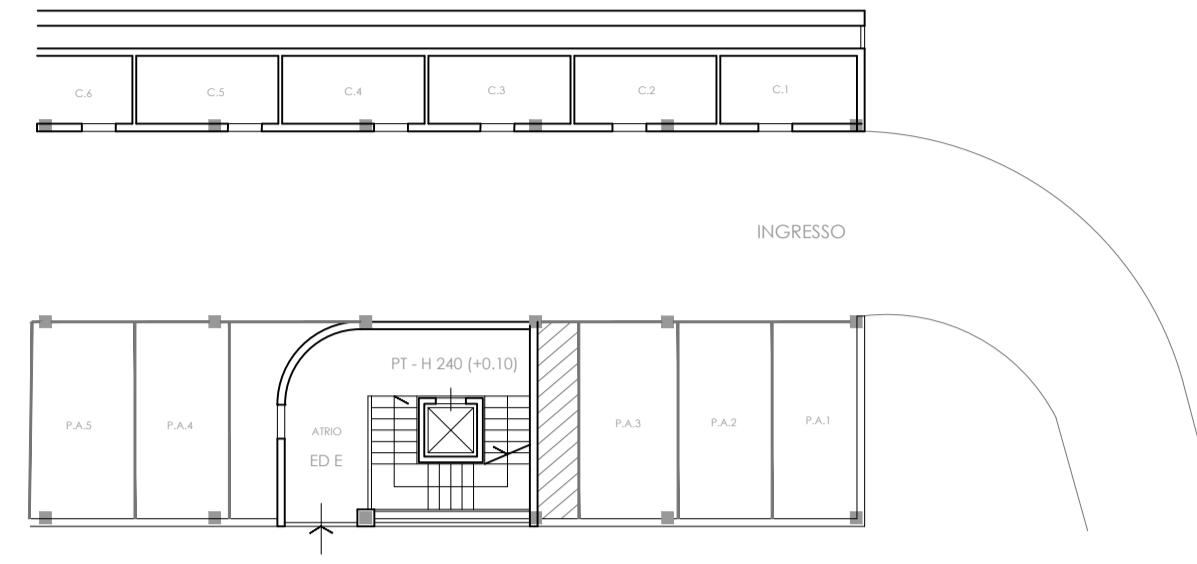
COPERTURA



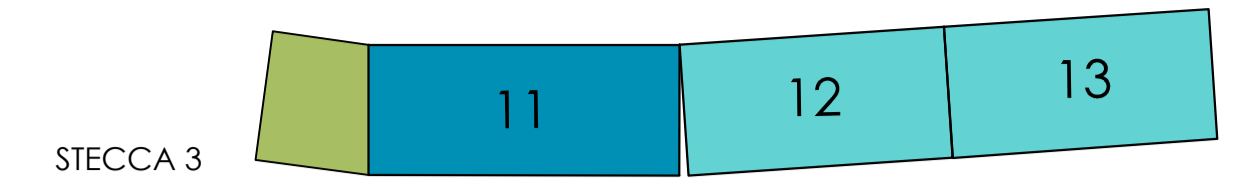
EDIFICIO 12 - TIPO E



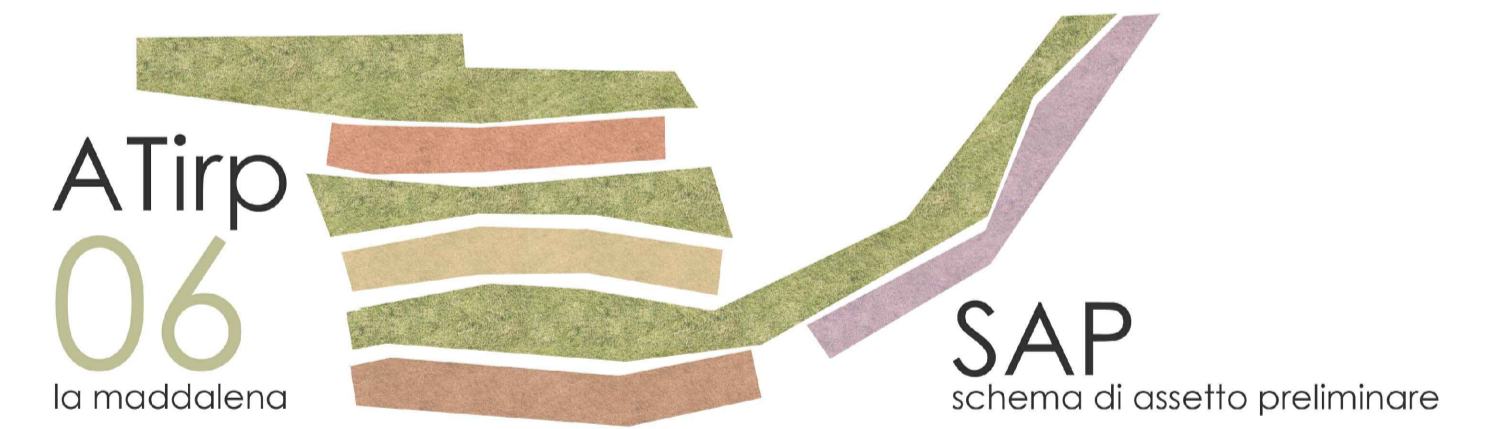
EDIFICIO 13 - TIPO E



SCHEMI DI AGGREGAZIONE



Comune di Cava de' Tirreni
dott. Vincenzo Servati
sindaco
arch. Giovanna Mirietti
assessore Governo del Territorio



Schema di Assetto Preliminare, ai sensi dell'articolo 102 delle Norme Tecniche di Attuazione del Piano Urbanistico Comunale e dell'articolo 60 del Regolamento Edilizio ed Urbanistico Comunale di Cava de' Tirreni, dell'Ambito di Trasformazione per Insediamenti Integrati di Riserva Pubblica ATirp-06 La Maddalena.

Progetto
sC.02 - Programma Integrato di
Edilizia Residenziale Sociale: Borgo Maddalena

TIPOLOGIE EDILIZIE - scala 1:200

Responsabile del procedimento
arch. Alberto Angioli

Direttore Settore Governo del Territorio
arch. Luigi Colazzo (progettista capogruppo)

Gruppo di progettazione
arch. Vincenzo Pepe
arch. Giuseppe Gerardo Saturno
arch. Valentina Teleno

Aspetti socio-economici
dott.ssa Valeria De Pascale

Hanno collaborato:
Angela Farinola
dott. Alessandro Manzo

2.11