

STECCA 1

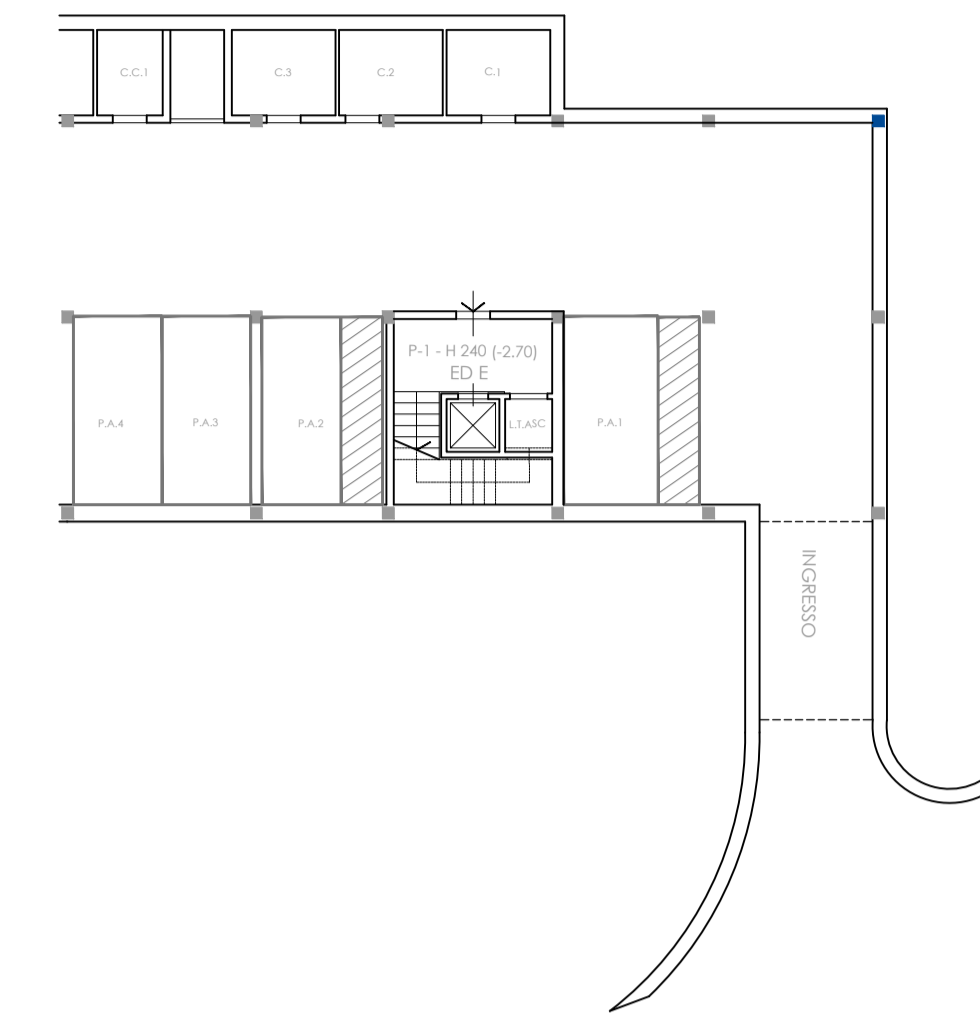
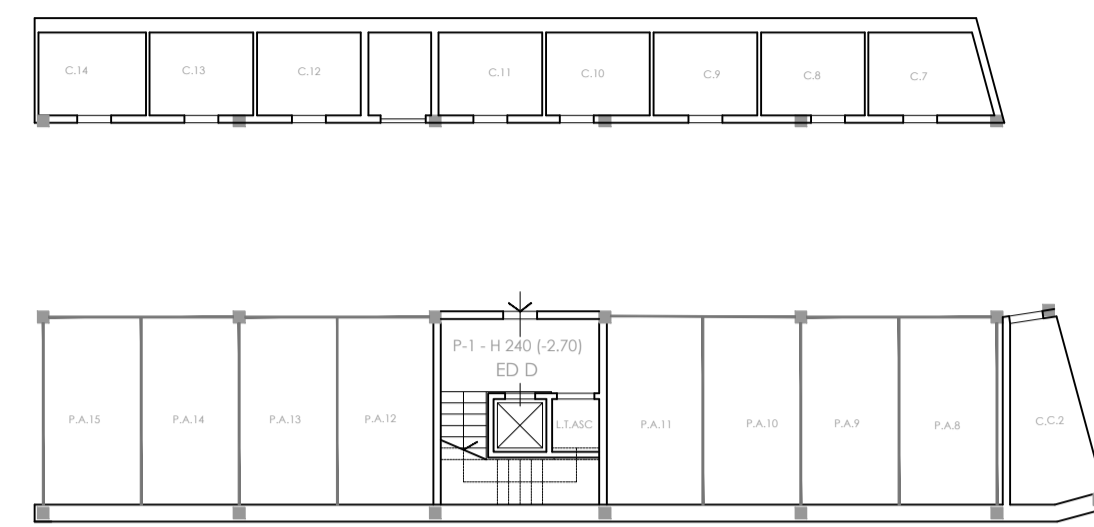
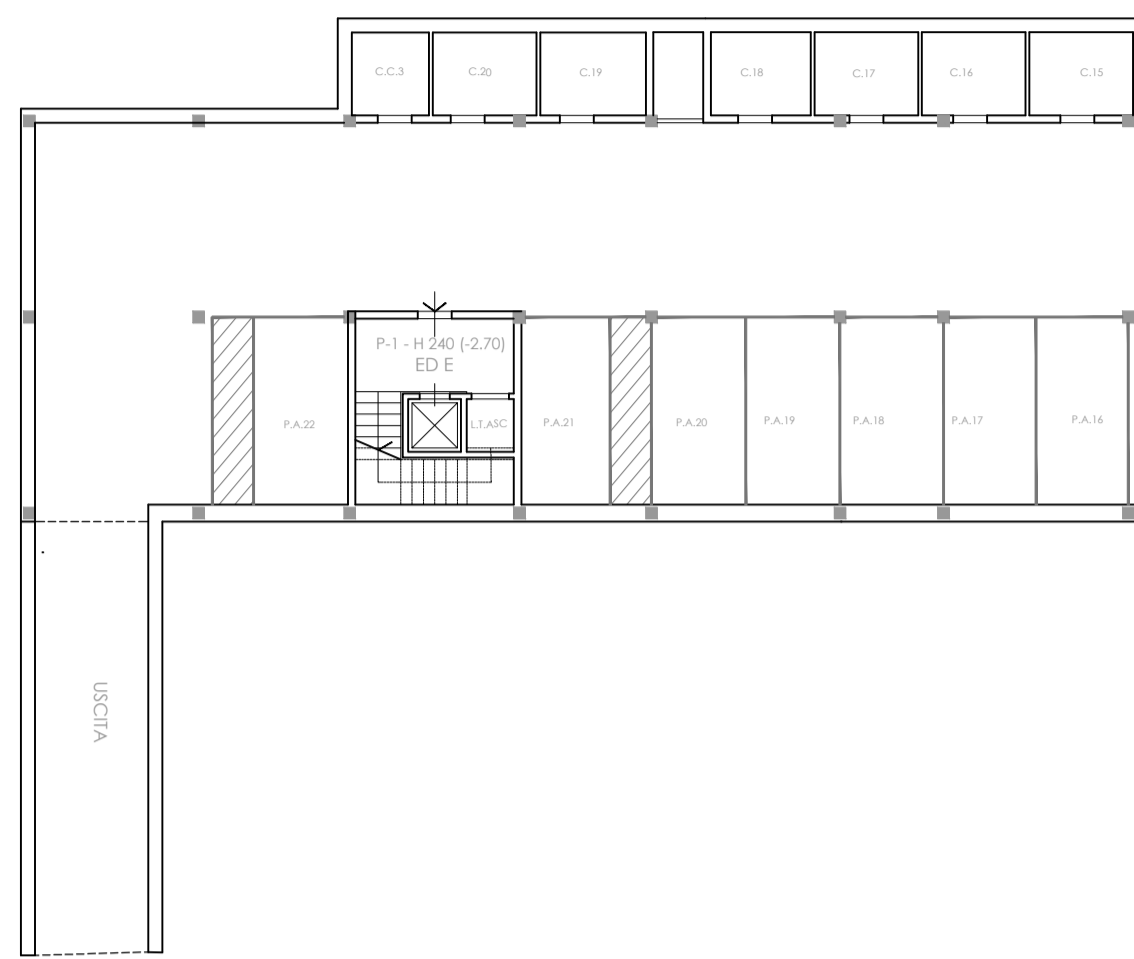
EDIFICIO 1 - TIPO E

EDIFICIO 3 - TIPO E

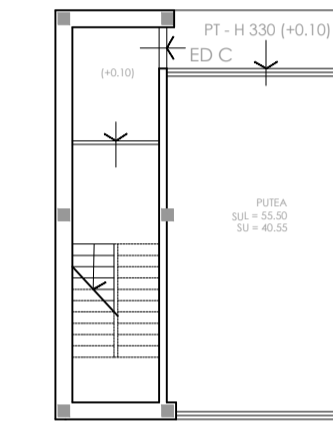
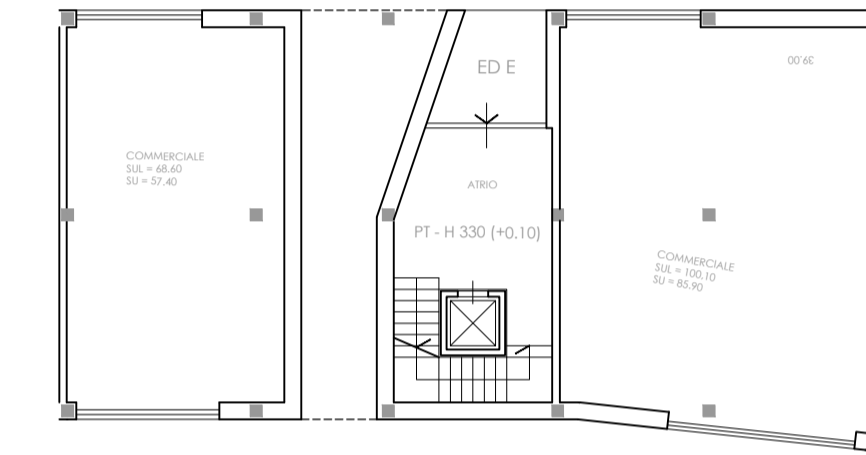
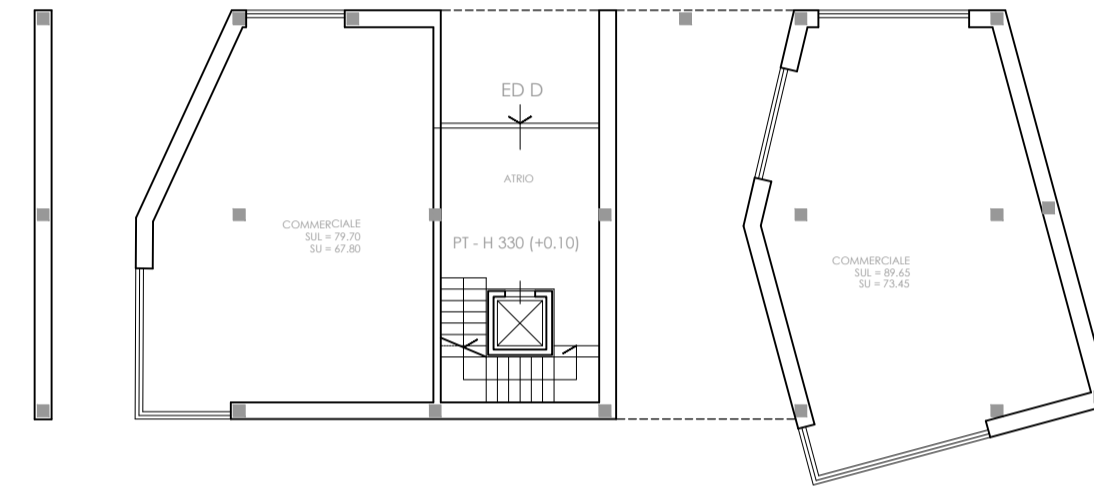
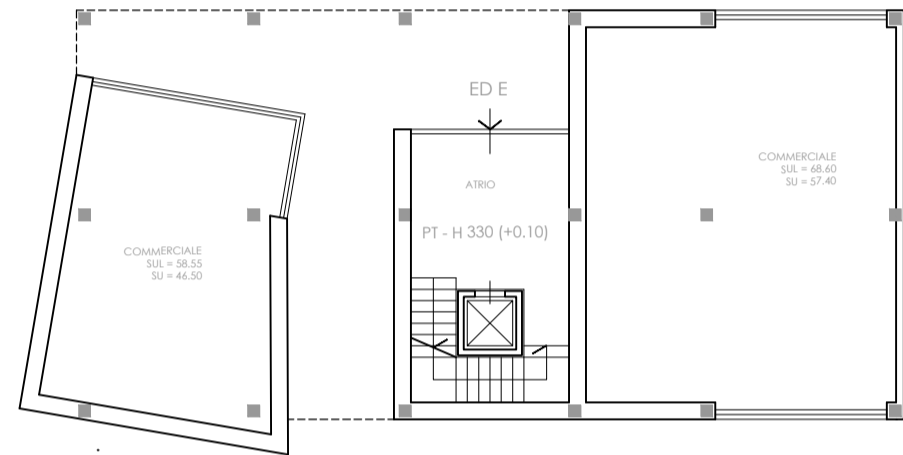
EDIFICIO 5 - TIPO E

EDIFICIO 2 e 4 TIPO C
CASA - BOTTEGA

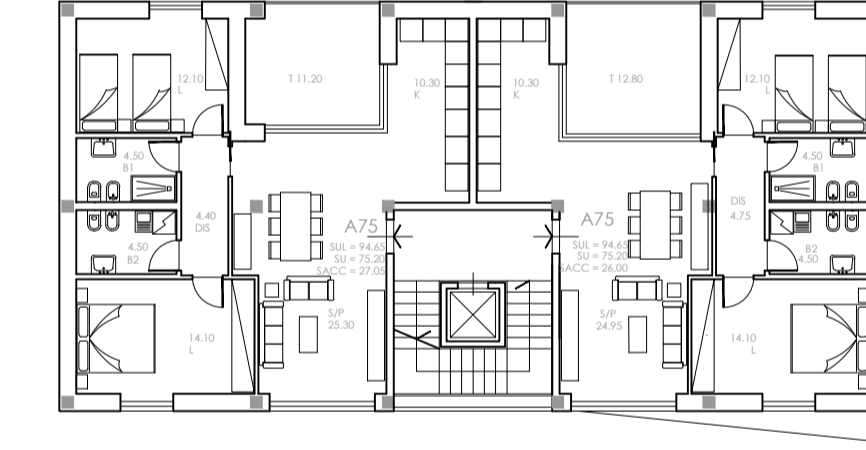
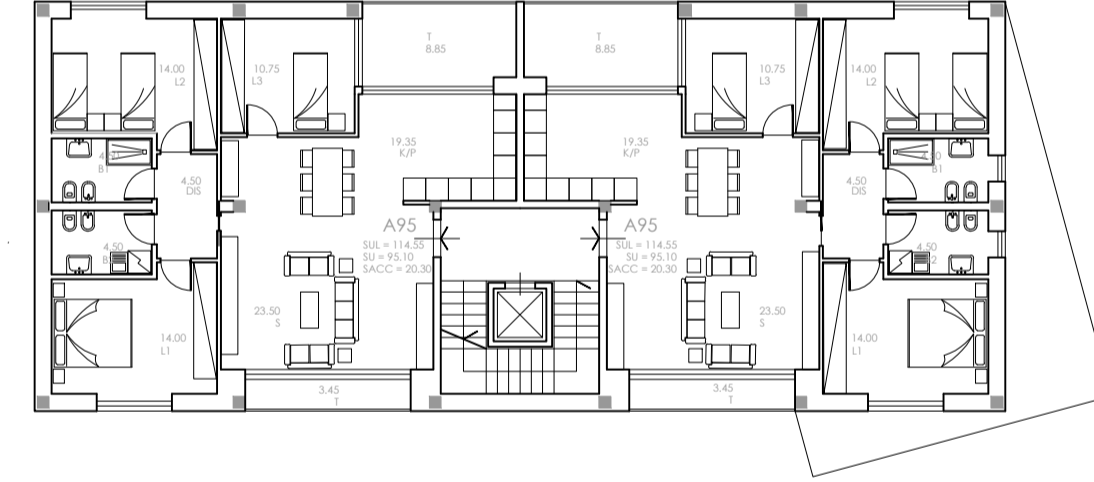
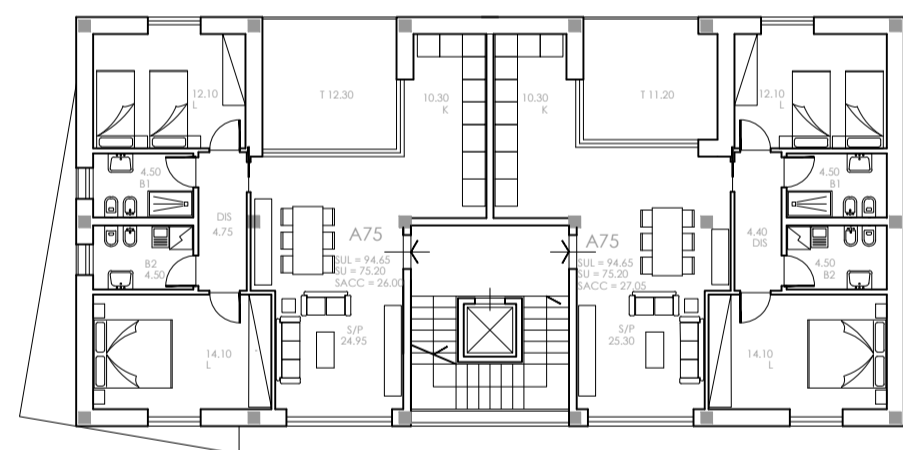
LIVELLO -1



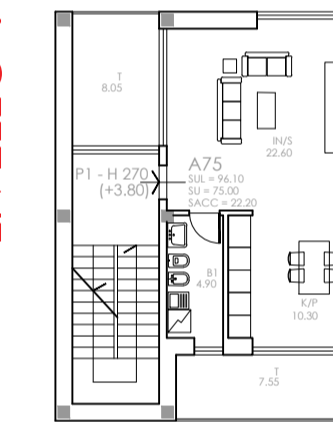
LIVELLO TERRA



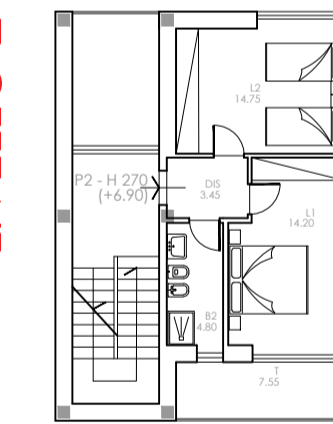
PIANO TIPO (1-2-3)



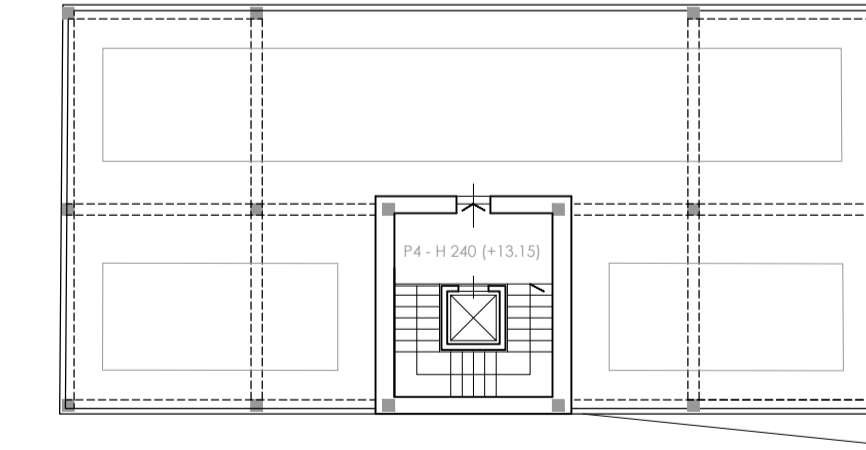
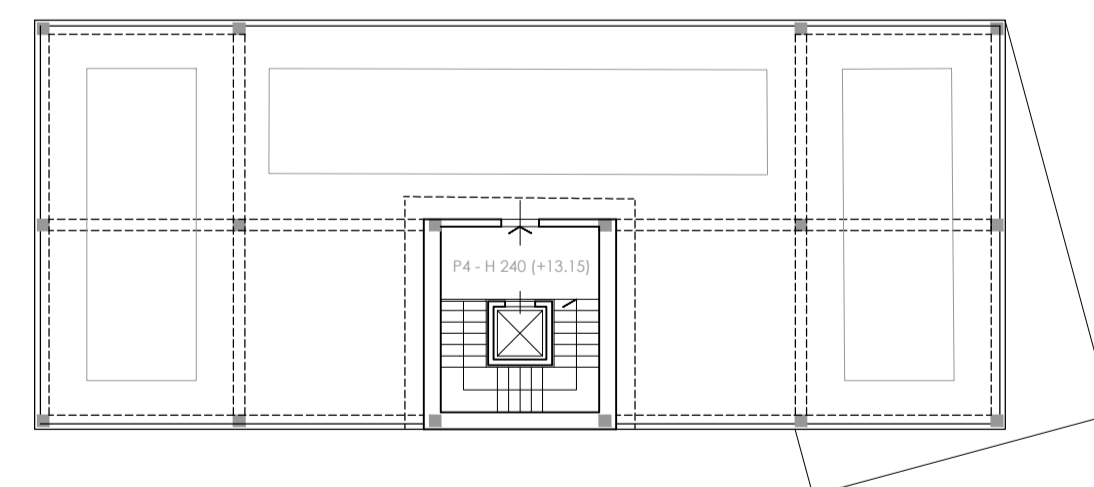
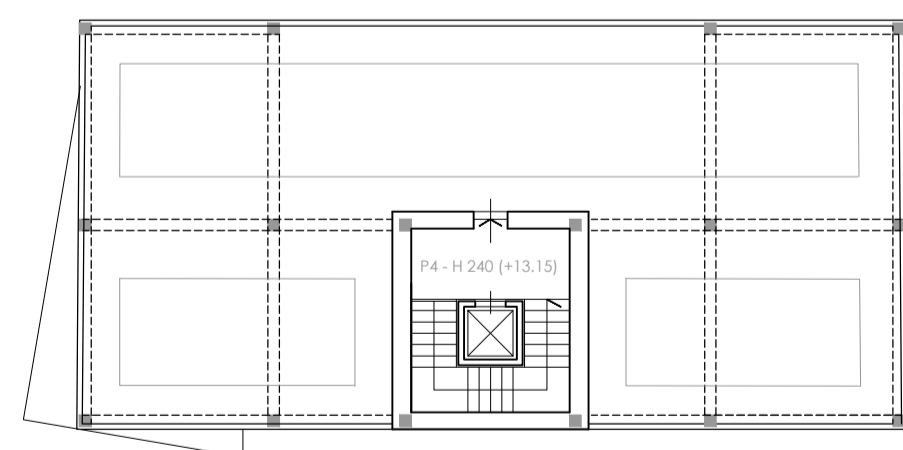
LIVELLO 1



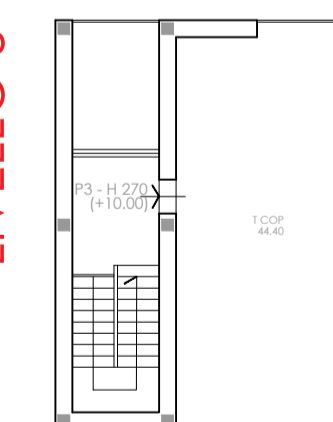
LIVELLO 2



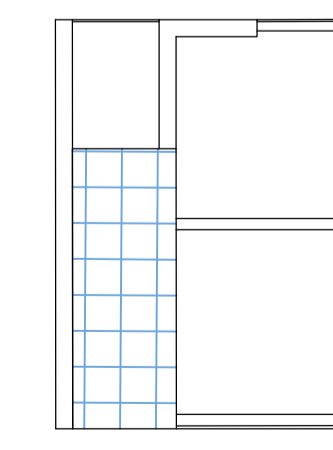
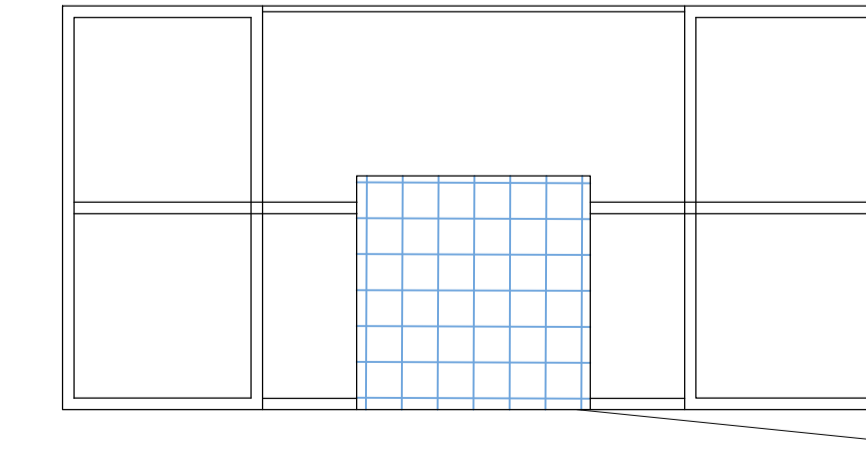
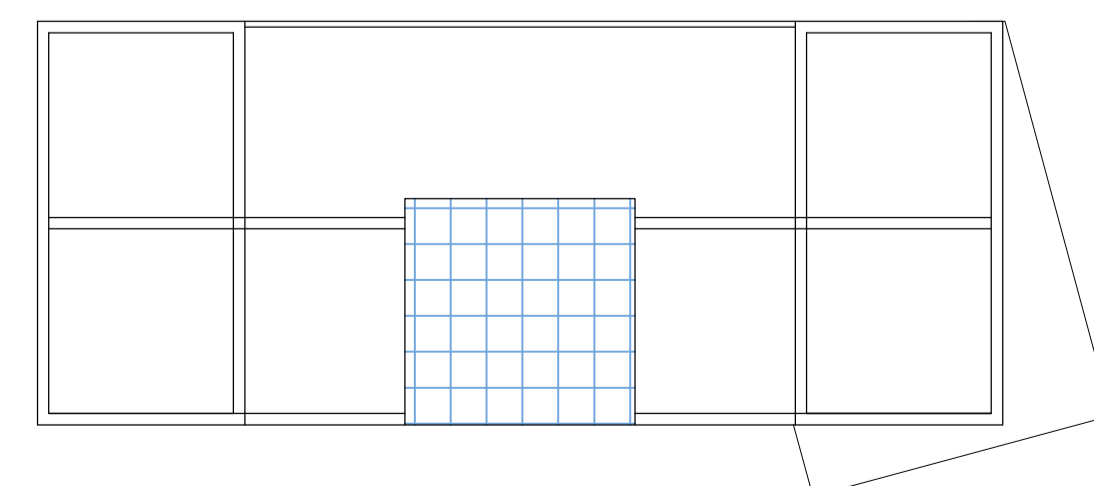
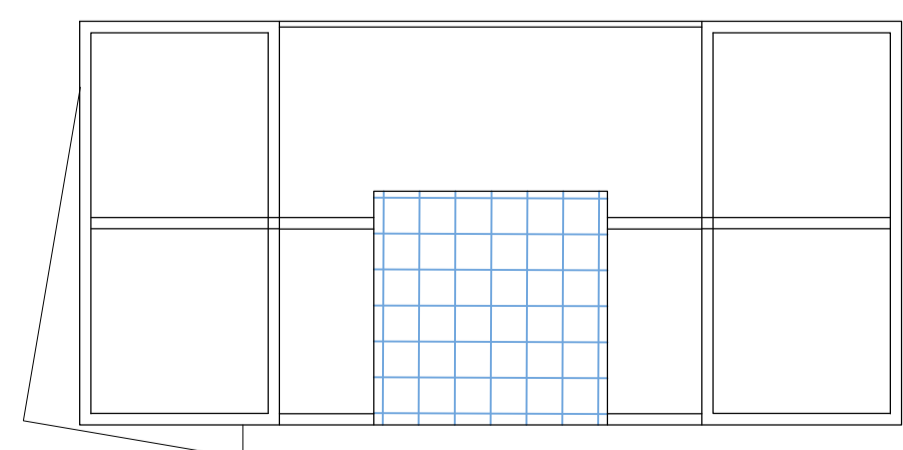
LIVELLO 4



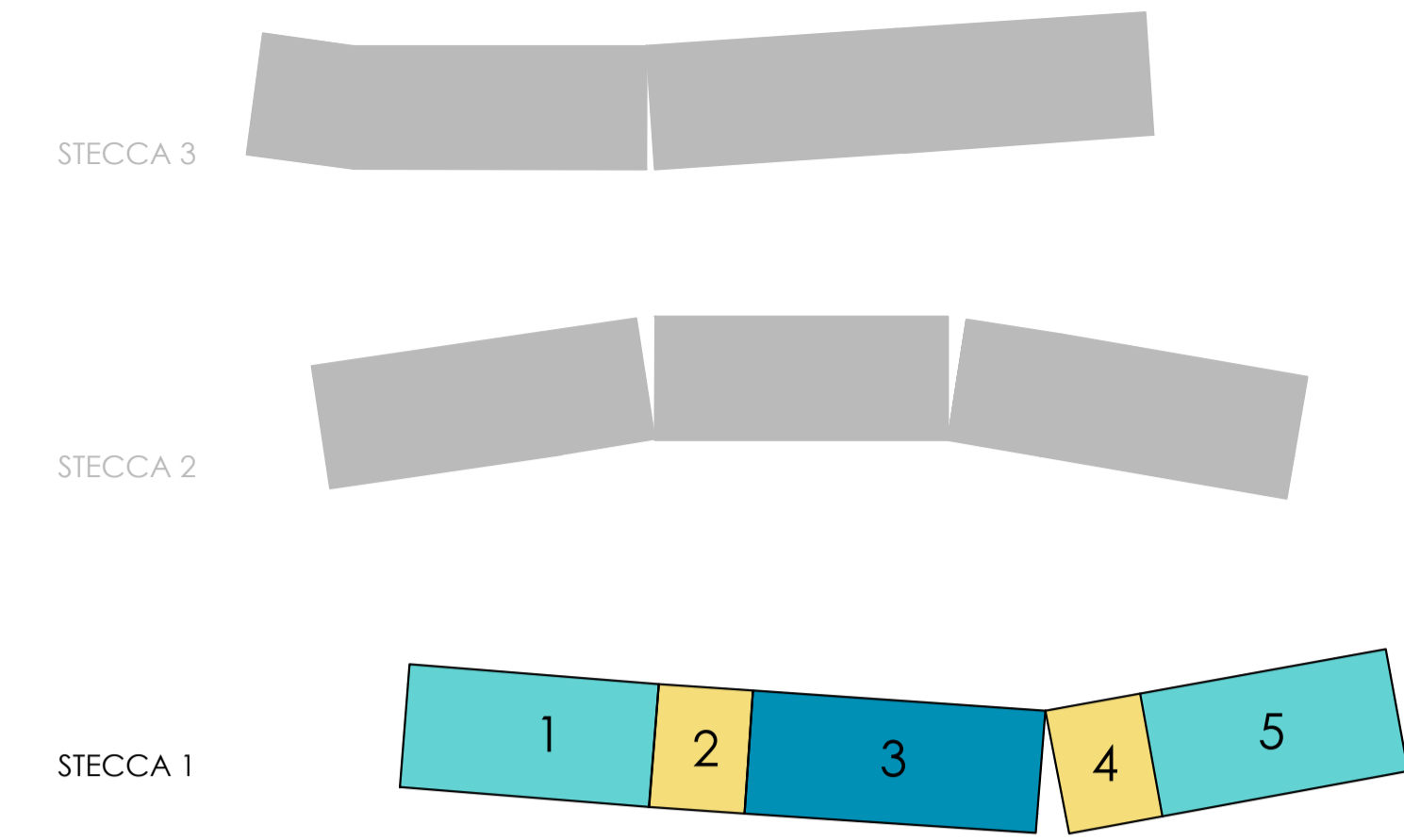
LIVELLO 3



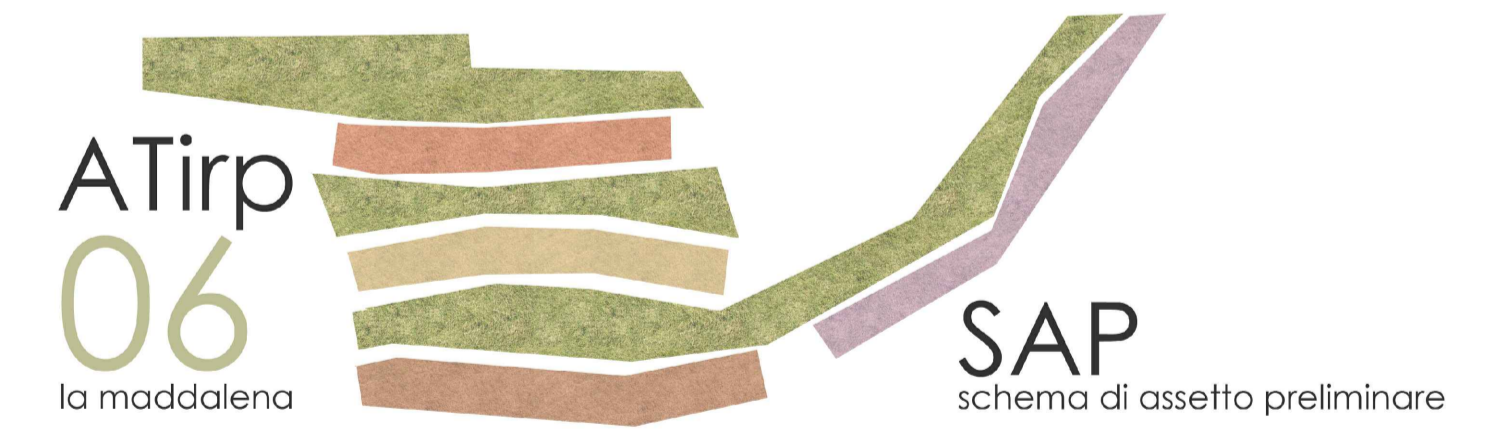
COPERTURA



SCHEMI DI AGGREGAZIONE



Comune di Cava de' Tirreni
dott. Vincenzo Servati sindaco
arch. Giovanna Mirati assessore Governo del Territorio



Schema di Assetto Preliminare, ai sensi dell'articolo 102 delle Norme Tecniche di Attuazione del Piano Urbanistico Comunale e dell'articolo 60 del Regolamento Edilizio ed Urbanistico Comunale di Cava de' Tirreni, dell'Ambito di Trasformazione per Insiediamenti Integrati di Riserva Pubblica ATirp-06 La Maddalena.

Progetto
sC.02 - Programma Integrato di
Edilizia Residenziale Sociale: Borgo Maddalena

TIPOLOGIE EDILIZIE - scala 1:200

Responsabile del procedimento
arch. Alberto Angileri
Dirigente Settore Governo del Territorio
arch. Luigi Colozza (progettista capogruppo)
Gruppo di progettazione
arch. Vincenzo Pepe
arch. Giuseppe Gerardo Saturno
arch. Valentina Taddei
Aspetti socio-economici
dott.ssa Valeria De Pascale
hanno collaborato:
Angela Farinacci
dott. Alessandro Manzo

2.9